

oakheart



£300,000

Guide Price

Tufnell Way, Colchester



Guide Price: £300,000 - £325,000 and offered with no onward chain is this well-presented semi-detached house, previously operating as a House in Multiple Occupation (HMO), presents an excellent investment opportunity, or first-time family home.

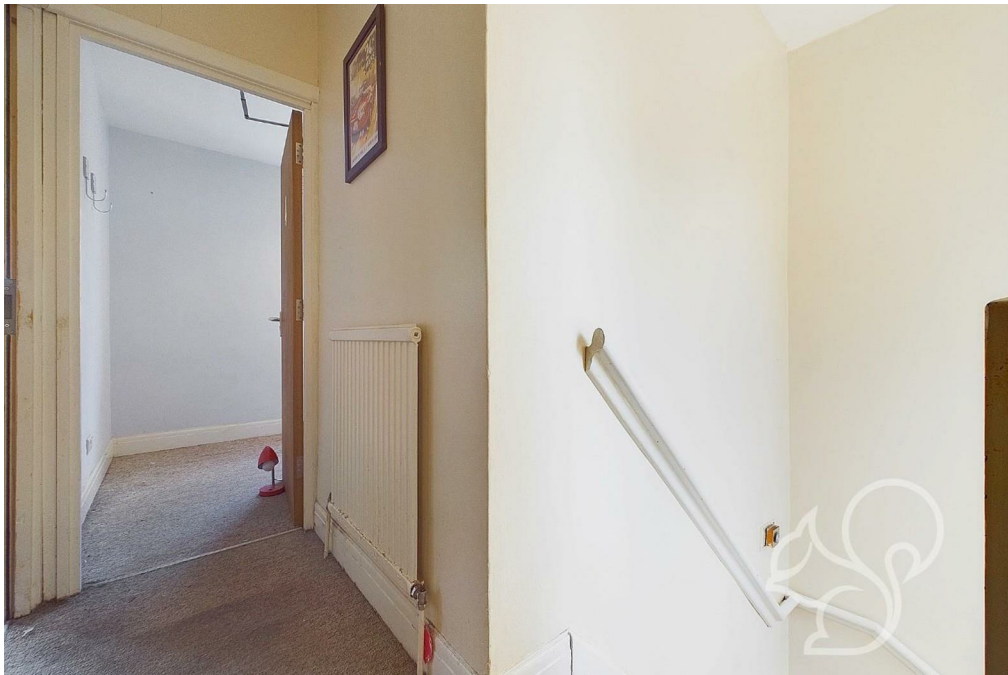
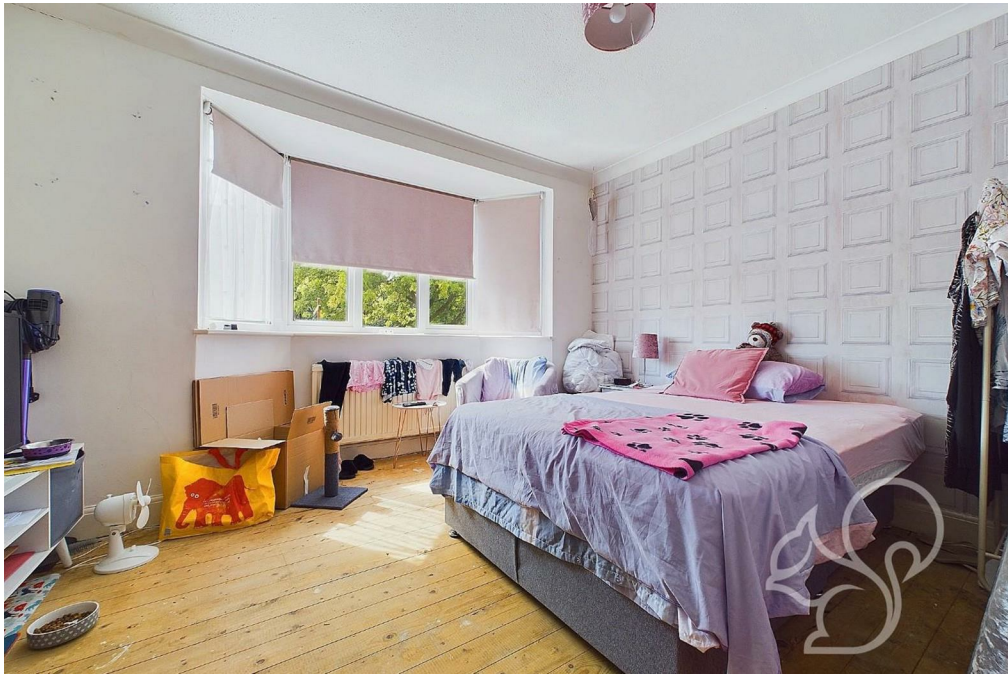
The property is configured as a three/four-bedroom home and the owner has advised previously has generated a rental income of £590 per room, per calendar month.

The spacious accommodation includes a generous kitchen/diner, complemented by a utility room for added convenience. On the ground floor, you'll find a versatile space that can serve as a lounge or an additional bedroom, along with a bathroom. The first floor comprises three well-proportioned bedrooms accessible via a central landing.

One of the standout features of this property is its prime location. It is within easy walking distance of Colchester's Mainline Train Station, offering direct links to London Liverpool Street, making it ideal for commuters. Additionally, the property is close to local shops and amenities, adding to its appeal.









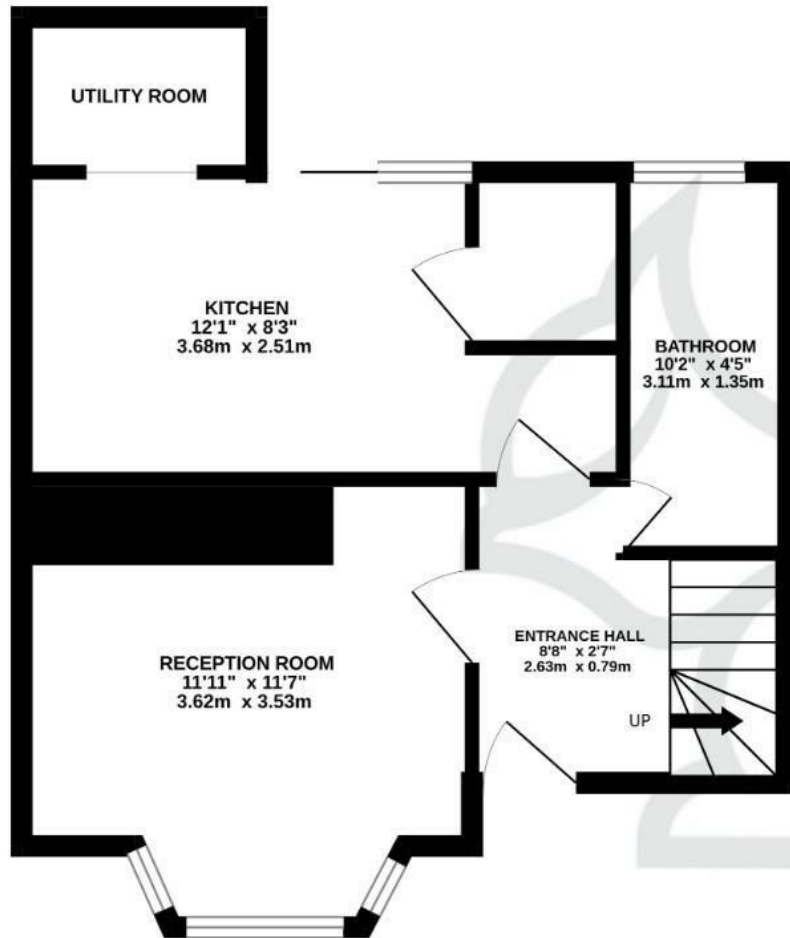




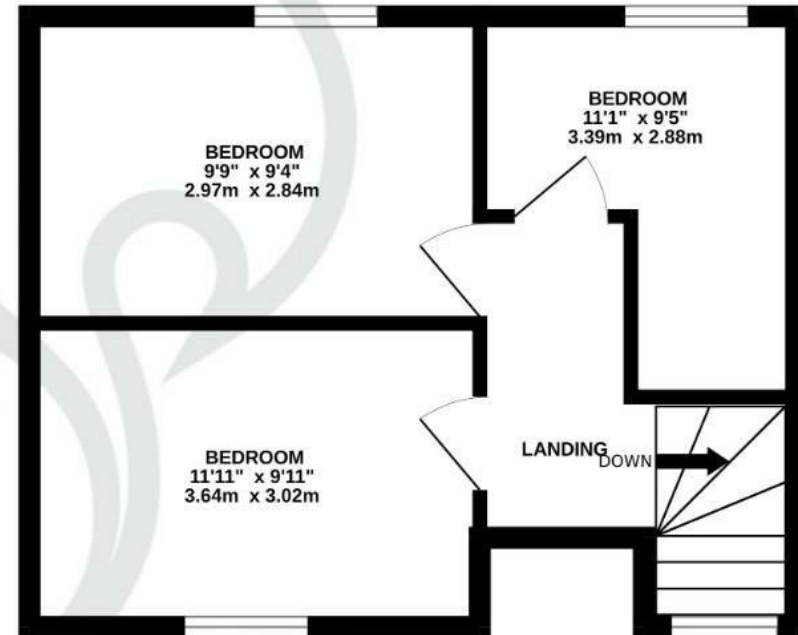




GROUND FLOOR  
379 sq.ft. (35.2 sq.m.) approx.



1ST FLOOR  
326 sq.ft. (30.3 sq.m.) approx.



TOTAL FLOOR AREA : 671sq.ft. (62.4 sq.m.) approx.

Whilst every attempt has been made to ensure the accuracy of the floorplan contained here, measurements of doors, windows, rooms and any other items are approximate and no responsibility is taken for any error, omission or mis-statement. This plan is for illustrative purposes only and should be used as such by any prospective purchaser. The services, systems and appliances shown have not been tested and no guarantee as to their operability or efficiency can be given.  
Made with Metropix ©2024


Local Authority:  
Colchester

Tenure:  
Freehold

Council Tax Band:  
B



## Energy Efficiency Rating

	Current	Potential
Very energy efficient - lower running costs		
(92 plus) <b>A</b>		
(81-91) <b>B</b>		
(69-80) <b>C</b>		77
(55-68) <b>D</b>		
(39-54) <b>E</b>	37	
(21-38) <b>F</b>		
(1-20) <b>G</b>		
Not energy efficient - higher running costs		
<b>England &amp; Wales</b>	EU Directive 2002/91/EC	

Agents Note: Whilst every care has been taken to prepare these particulars, they are for guidance purposes only. All measurements are approximate and are for general guidance purposes only and whilst every care has been taken to ensure their accuracy, they should not be relied upon.

# oakheart

Oakheart Colchester

01206 803 308

[colchester@oakheart.co.uk](mailto:colchester@oakheart.co.uk)

2b Cotman Road, Colchester, Essex, CO3 4QJ